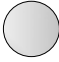


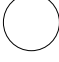
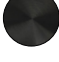






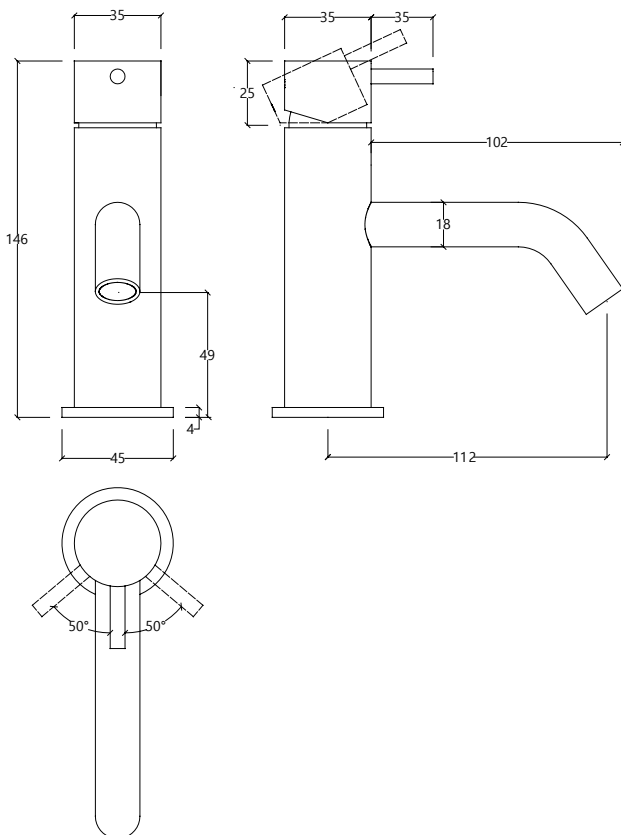
GR.01.1.01



AVAILABLE FINISHES

-  CR | Chrome
-  BI | Brushed stainless steel
-  BL | Black
-  WH | White
-  BB | Brushed Black *PVD
-  BR | Brushed Bronze *PVD
-  BC | Brushed Copper *PVD
-  BG | Brushed gun metal *PVD
-  BW | Brushed white gold *PVD

TECHNICAL DRAWING
(MEASUREMENT IN MM)



INSTALLATION RECOMMENDATIONS

The installation must be made by specialized technicians that have to consider the instructions contained on the product. The components of the product cannot be altered or modified, otherwise the warranty will be annulled. The recommended pressure and temperature must be strictly followed. If they are exceeded or reduced, it can cause permanent damages to the tap.

CLEANING AND MAINTENANCE

We recommend regular maintenance of the tap in order to assure the permanent good function of it. To clean the tap, please use a smooth cloth with water and neutral soap. Never use products with abrasives substances such as chloride acid, ammonia, acetone, vinegar, bleach or abrasive sponges. The usage of non-recommended products might damage permanently the surfaces which will annul the warranty.

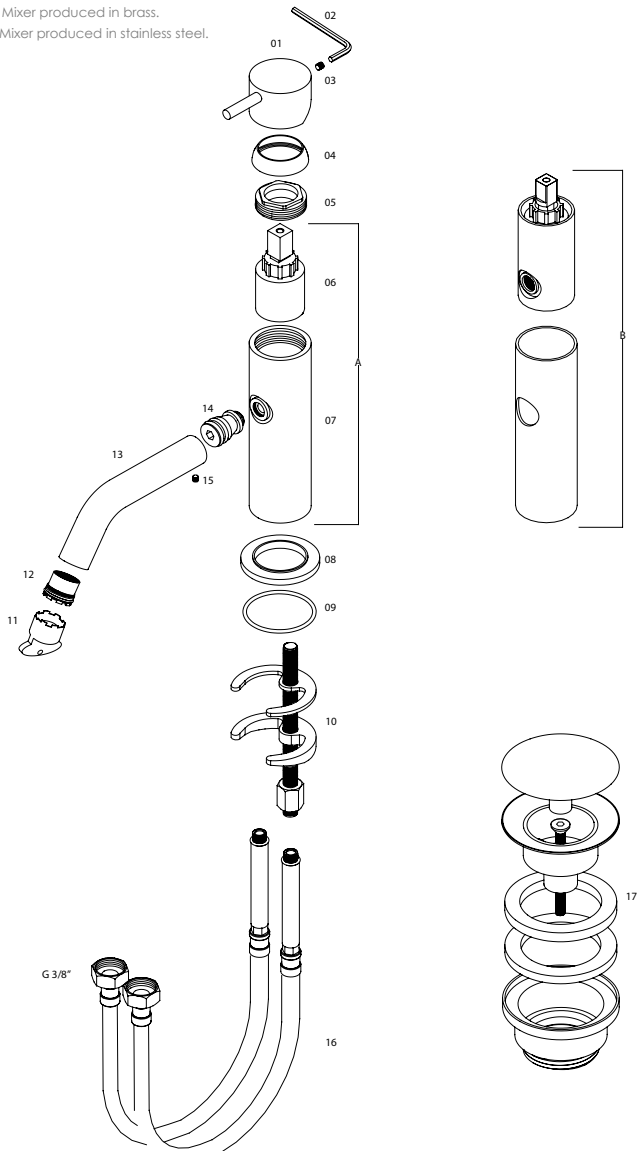
WARRANTY

Formma guarantees all its products in case of manufacturing defects, as follows:

- 5 Year warranty:
 - Machining or casting faults and porosity defects;
 - Cartridge and valve defects (the wear of this component depends on water quality);
 - Chrome plating or PVD defects. Defects caused by improper use are excluded, please refer to the maintenance instructions.;
 - 2 Year warranty:
 - Powder Coating finishes. Defects caused by improper use are excluded, please refer to the maintenance instructions.
- Our responsibility is exclusively subject to defects originated on the production process.
The warranty does not cover components subject to wear and tear, such as O-rings, gaskets, flexible hoses and joints for connections.

COMPONENT DRAWING

A: Mixer produced in brass.
 B: Mixer produced in stainless steel.



Attention :

Natural finishes, such as brass or stainless steel, depend entirely on the exposure to the environment and maintenance. Therefore, any stain that may appear cannot be considered a product defect. The warranty gives the customer the right to have all the parts replaced, free of charge, if they are not working properly, due to manufacturing fault.

The following are excluded from the warranty:

- Items or parts which are damaged or do not work properly due to negligence in the use or wrong maintenance;
- Wrong installation;
- Intervention by unqualified people or circumstances beyond one's control.

In order to use this warranty, please keep the invoice and attach it to this document. Defective products must be sent to Formma with shipping expenses borne by the sender. This warranty document and a copy of the purchase invoice must be attached to the package. The products will be promptly replaced and sent back with shipping expenses borne by Formma.

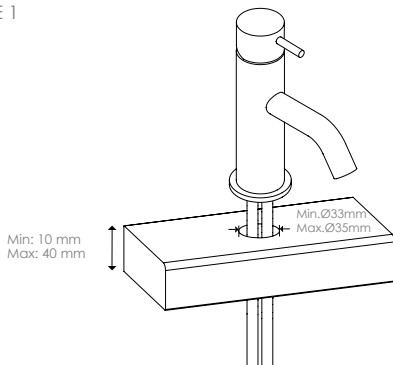
TECHNICAL DATA

n°	DESCRIPTION
01	HANDLE
02	ALLEN KEY
03	SCREW
04	CARTRIDGE CONCEALER
05	FASTENING NUT
06	CARTRIDGE
07	MIXER BODY
08	PLATE
09	O'RING
10	FIXING KIT
11	AERATOR KEY
12	AERATOR
13	SPOUT
14	SPOUT ADAPTER
15	SPOUT SCREW
16	FLEXIBLE CONNECTION
17	CLICK CLACK WASTE VALVE

MINIMUM PRESSURE	1 BAR
MAXIMUM PRESSURE	10 BAR
RECOMMENDED PRESSURE	2-5 BAR
MAXIMUM TEMPERATURE	70° / 176 F
RECOMMENDED TEMPERATURE	65° / 149 F
FLOW RATE WITH AERATOR	5.6 l/min - 3 BAR

ASSEMBLY INSTRUCTIONS

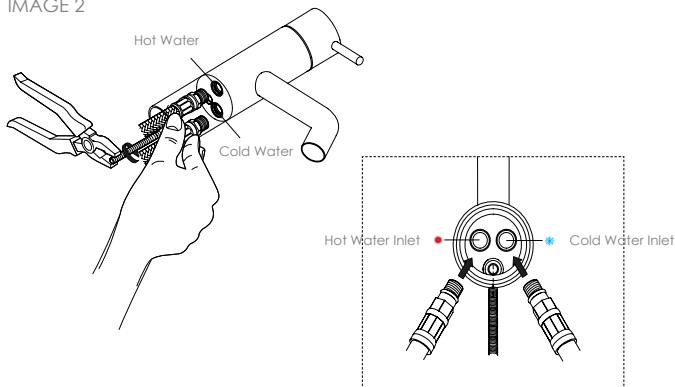
IMAGE 1



01 - Before starting the installation, confirm that the measurement of the hole and the height of the top/washbasin are in accordance with the minimum and maximum indicated on the picture.

Diameter of the hole: Min: 33 mm | Max: 35 mm.
Height of the top/washbasin: Min. 10 mm | Max: 40 mm.

IMAGE 2

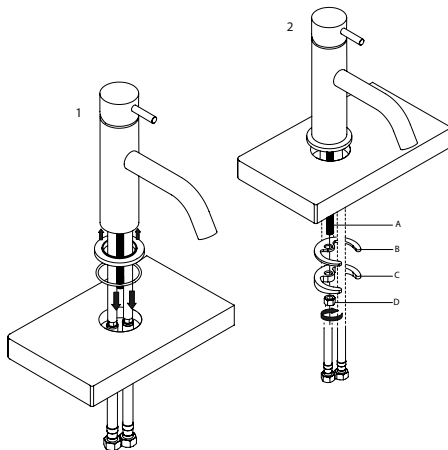


01 - Proceed to the water connections, connecting cold and hot water to the corresponding tubes

02 - Please guarantee that these connections are done correctly before placing the mixer on the hole.

03 - Tighten the threaded rod to the hole that is in the centre of the water inlets.

IMAGE 3



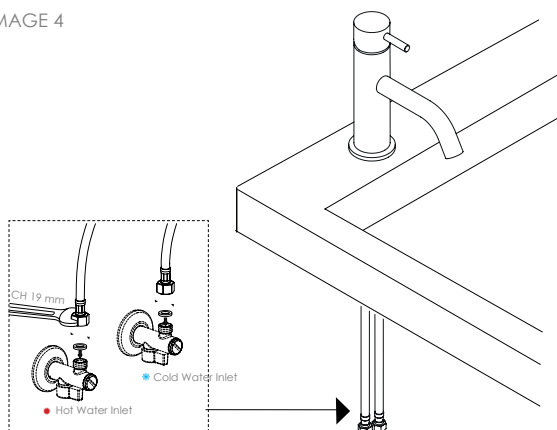
1.1 - Place the plate and the corresponding o'ring on the base of the tap.

1.2 - Fit the flexible connections and the threaded rod inside the top/washbasin hole.

2.1 - Fit the fixing hardware (picture C) and the corresponding sealing ring (picture B) to the threaded rod (picture A).

2.2 - Screw the locknut (picture D) to the threaded rod, with the help of a proper key.

IMAGE 4

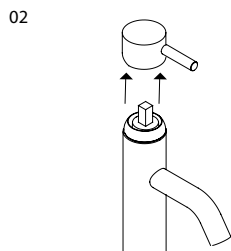
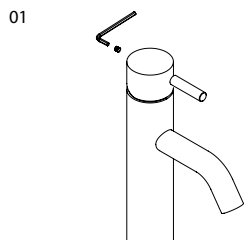


01 - Ensure that the mixer is securely fixed to the top/washbasin.

02 - Proceed with the tightening of the flexible connections to the hot/cold water stop valves.

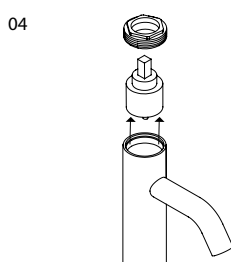
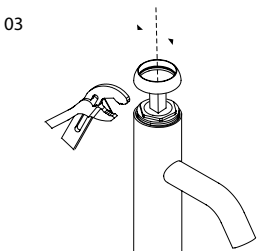
03 - Verify if it is sealed correctly before concluding the installation.

CARTRIDGE REPLACEMENT



01 - Unscrew the handle with the help of the allen key.

02 - Remove the handle from the top of the cartridge.

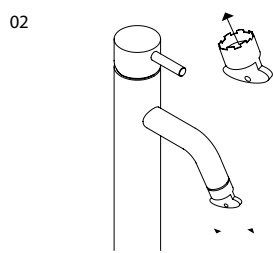
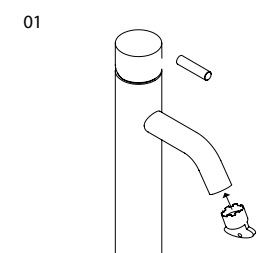


03 - Unscrew cartridge concealer placed inside the body of the mixer. Loosen the locknut with the help of a wrench.

04 - After removing the locknut, you will be able to remove the cartridge and proceed to its replacement.

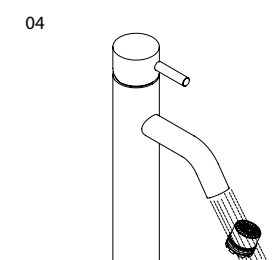
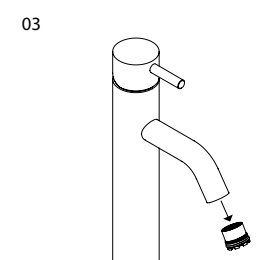
To apply a new cartridge, please consider the reverse procedure.

AERATOR REPLACEMENT AND CLEANING



01 - Use the proper key, supplied in the spout box, to unscrew the aerator (piece n° 1 in components list).

02 - Fit the aerator key on the end of the spout and unscrew it.



03 - Remove the aerator from the spout.

04 - After removing the aerator, wash it with running water to eliminate any remaining debris.

If this procedure is not enough or if the aerator is damaged, it should be replaced, following the reverse procedure.