

# ELECTRONIC SINGLE WATER SENSOR SET WITH 110V-230V TRANSFORMER AND CIRCULAR TRIM WITH 21CM SPOUT

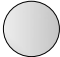








formma.

## GR.01.2.15.XX

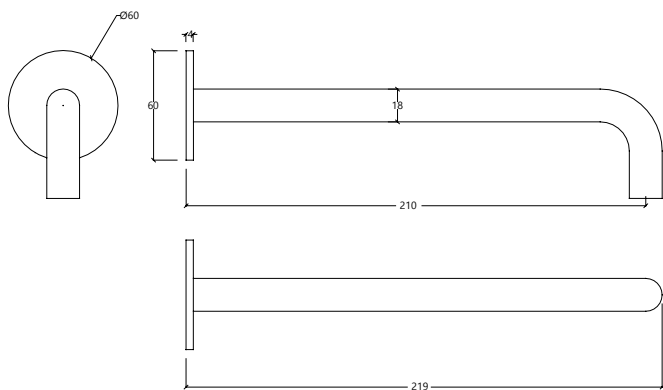
GR.01.5.14.XX (Spout)



### AVAILABLE FINISHES

-  **CR** | Chrome
-  **BI** | Brushed stainless steel
-  **BL** | Black
-  **WH** | White
-  **BB** | Brushed Black \*PVD
-  **BR** | Brushed Bronze \*PVD
-  **BC** | Brushed Copper \*PVD
-  **BG** | Brushed gun metal \*PVD
-  **BW** | Brushed white gold \*PVD

### TECHNICAL DRAWING (MEASUREMENT IN MM)



### INSTALLATION RECOMENDATIONS

Before installing a tap, it is good to rinse the supply pipes to remove all residues. We also recommend installing the taps with a filter. The installation of the tap must be done with the surface clean and dry. To perform the water pressure test, the taps must be open.

### CLEANING AND MAINTENANCE

Cleaning must be done with liquid soap and water. Do not use liquid detergents containing abrasive or acidic substances, abrasive sponges or disinfectants. Incorrect cleaning may permanently ruin the surface of taps. On color finishings, do not use products containing alcohol, acetone and other solvents.

### WARRANTY

Formma guarantees all its products in case of manufacturing defects, as follows:

- 5-year warranty:
  - Fusion or porosity defects;
  - Cartridge defects (the wear of this component depends on water quality);
  - Chrome plating defects (defects caused by maintenance errors are excluded, please refer to cleaning instructions).
- 1-year warranty:
  - O-rings or fittings defects.
  - Defects on remaining finishes.

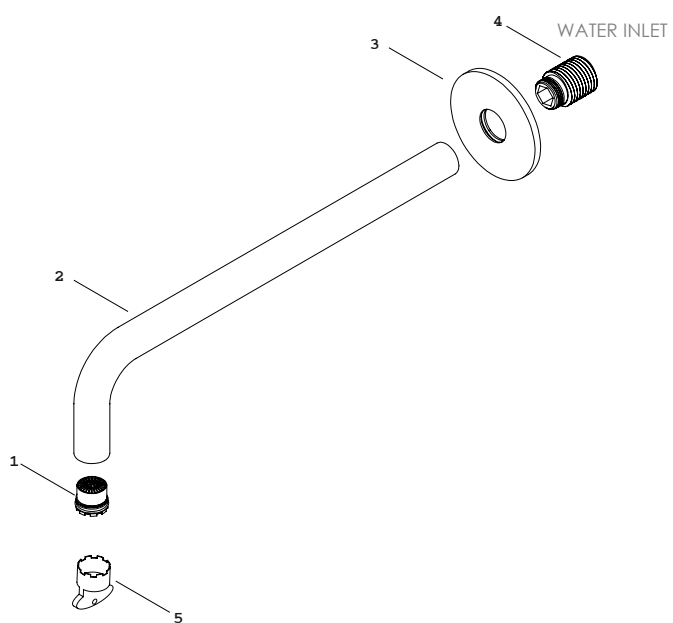
In order to use this warranty, please keep the invoice and attach it to this document.

Warranty grants the right of free replacement of parts that cause an irregular operation due to manufacturing defects, in every cases in which malfunction is not caused by incorrect use, maintenance errors, irregular installation, assembly made by unqualified people or reasons of force majeure.

Defective products must be sent to formma, with shipping expenses borne by the sender – this warranty document and a copy of the purchase invoice must be attached to the package – where the products will be promptly replaced and send back with shipping expenses borne by formma.

Non-compliance of this conditions will render the warranty null and void. This warranty excludes any liabilities on the consequences arising from use or installation defects of formma products.

## COMPONENT DRAWING



## TECHNICAL DATA

| n° | DESCRIPTION  |
|----|--------------|
| 01 | AERATOR      |
| 02 | SPOUT        |
| 03 | PLATE        |
| 04 | CANNON       |
| 05 | AERATOR KEYS |

# ELECTRONIC SINGLE WATER SENSOR SET WITH 110V-230V TRANSFORMER AND CIRCULAR TRIM WITH 21CM SPOUT

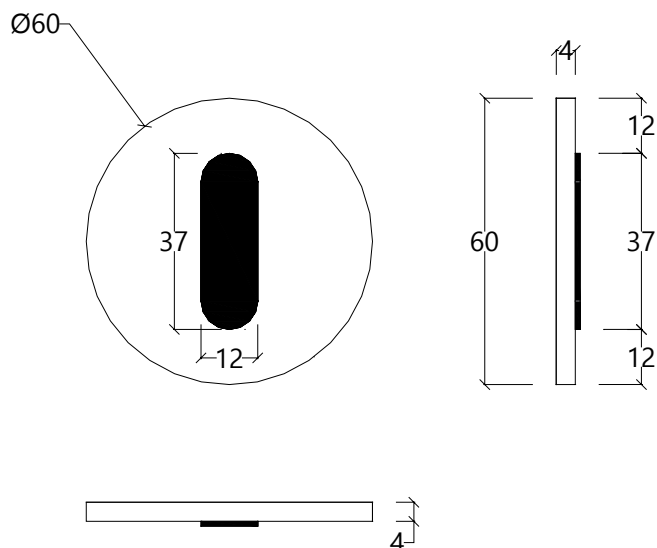
formma.

## GR.01.2.15.XX

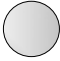


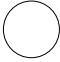





GR.01.4.07.XX (Single lever)



### TECHNICAL DRAWING (MEASUREMENT IN MM)



### AVAILABLE FINISHES

-  **CR** | Chrome
-  **BI** | Brushed stainless steel
-  **BL** | Black
-  **WH** | White
-  **BB** | Brushed Black \*PVD
-  **BR** | Brushed Bronze \*PVD
-  **BC** | Brushed Copper \*PVD
-  **BG** | Brushed gun metal \*PVD
-  **BW** | Brushed white metal \*PVD

### INSTALLATION RECOMENDATIONS

Before installing a tap, it is good to rinse the supply pipes to remove all residues. We also recommend installing the taps with a filter. The installation of the tap must be done with the surface clean and dry. To perform the water pressure test, the taps must be open.

### CLEANING AND MAINTENANCE

Cleaning must be done with liquid soap and water. Do not use liquid detergents containing abrasive or acidic substances, abrasive sponges or disinfectants. Incorrect cleaning may permanently ruin the surface of taps. On color finishings, do not use products containing alcohol, acetone and other solvents.

### WARRANTY

Formma guarantees all its products in case of manufacturing defects, as follows:

- 5-year warranty:
  - Fusion or porosity defects;
  - Cartridge defects (the wear of this component depends on water quality);
  - Chrome plating defects (defects caused by maintenance errors are excluded, please refer to cleaning instructions).
- 1-year warranty:
  - O-rings or fittings defects.
  - Defects on remaining finishes.

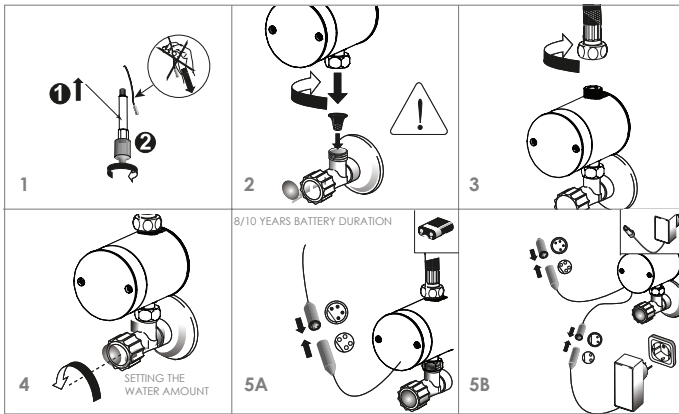
In order to use this warranty, please keep the invoice and attach it to this document.

Warranty grants the right of free replacement of parts that cause an irregular operation due to manufacturing defects, in every cases in which malfunction is not caused by incorrect use, maintenance errors, irregular installation, assembly made by unqualified people or reasons of force majeure.

Defective products must be sent to formma, with shipping expenses borne by the sender – this warranty document and a copy of the purchase invoice must be attached to the package – where the products will be promptly replaced and send back with shipping expenses borne by formma.

Non-compliance of this conditions will render the warranty null and void. This warranty excludes any liabilities on the consequences arising from use or installation defects of formma products.

ASSEMBLY INSTRUCTIONS



SENSOR SETUP

The sensor used has a defaults: 2 opening seconds and 12 cm distance. If you intend a new configuration follow the instructions described below. Setup is a simple process requiring some sensitivity in touch and finger placement. The sensor can be set times that you intend to do. In improper configuration case back to enable the water again factory and start value process(perform reset pulling power supply).

The sensor is divided into two separate areas: the area is top cell and a signal led in the area bottom lies the configuration zone. Time setup

1- cover with finger area sensor bottom for 2 seconds to be green. removing the finger.

2- cover with finger area sensor bottom for 2 seconds to stay red. removing the finger.

3- back to cover with finger area sensor bottom till sign red flashes intermittently. Each flashing sign is a second. to choose the time that you want to open water, cover the bottom area sensor to the number of seconds intended for water gap. example: 3 signals flashing = 3 seconds.

4- removing the finger after selecting the desired seconds for water gap.

5- so appears and disappear a green signal, the configuration is terminate.

Distance setup

1- cover with finger ar ea sensor bottom for 2 seconds to be green. removing the finger

2- cover the area of low flashing way sensor, 2 time after time (very fast, 0.5 seconds of fence) - action this is in replay signed each with a sign green very fast and simultaneously with the movement.

3- cover without removing the finger, sensor lower area during / - 15 seconds. during that time 4 red signs arise intermittently.

4 - starts again (/ - 5 seconds later) signals red flashing. every sign means 1 inch ( 2.54cm).

Maximum of 8 inches are distance (20.32cm). in total must appear 8 signs red flashing.

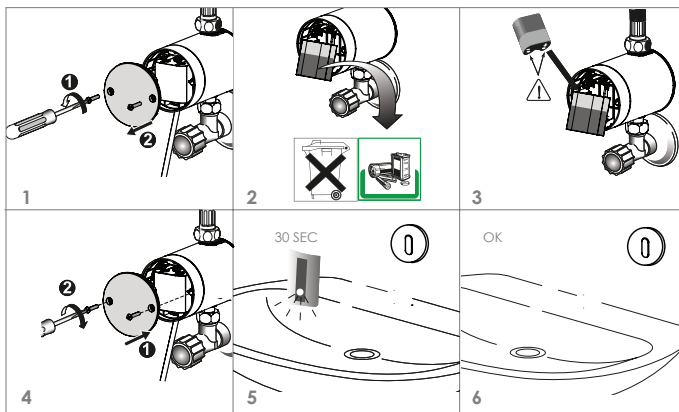
5 - removing the sensor finger in desired distance.

example: 15cm for distance = 6 signals flashing (always with finger to cover the bottom area and sensor just remove finger to sixth sign).

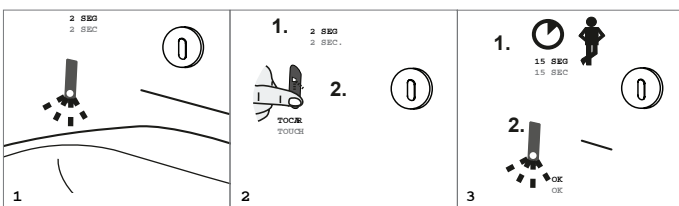
6 - after removing the finger, exit immediately sensor coverage area (area 1m2) .The sensor will make an auto test and during this test must be unhindered coverage area.

7 - so appears and disappear a sign green configuration is terminate.

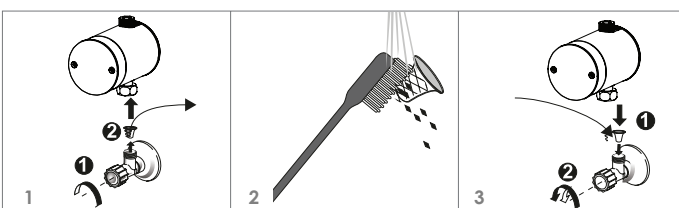
CHANGING THE BATTERY



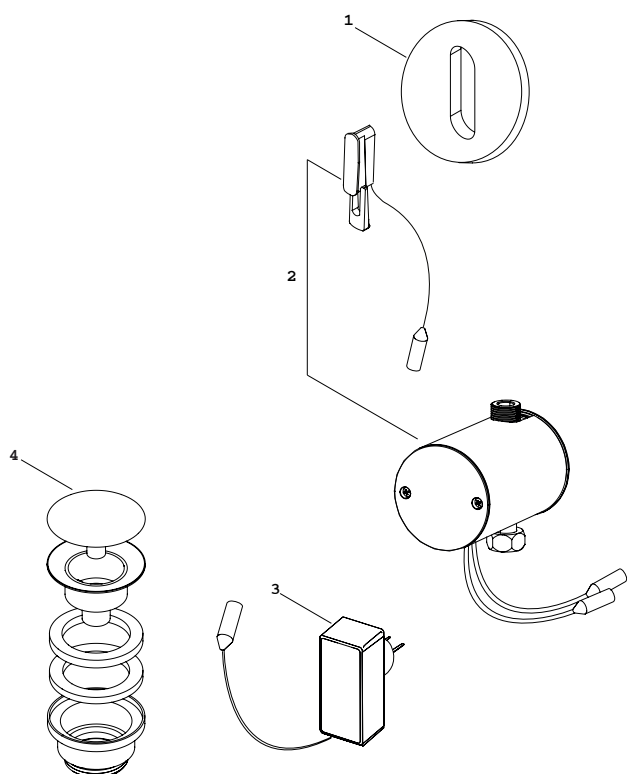
SENSOR SETUP



CLEANING THE FILTER



## COMPONENT DRAWING



## TECHNICAL DATA

| n° | DESCRIPTION       |
|----|-------------------|
| 01 | PLATE             |
| 02 | ELECTRONIC SYSTEM |
| 03 | BATTERY           |
| 04 | AUTOMATIC VALVE   |